



Empire Industries has been a proud associate member of and contributor to Water and Sewer Distributors of America since 2012.

CLAMPS



FIG. DPCSS
Manhole Clamp

Finishes:
T-304 Stainless Steel
Size Types:
SDR35, IPS, DIP
Mounting Kit (DPCSSKIT) also
available

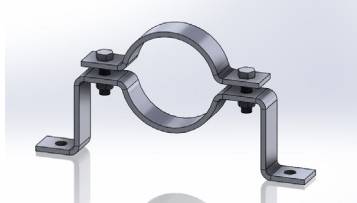


FIG. 95
Offset Pipe Clamp

Finishes:
Plain, Electro-Galvanized,
Hot-Dip Galvanized, T-304 and
T-316 Stainless Steel
Size Types:
IPS, DIP

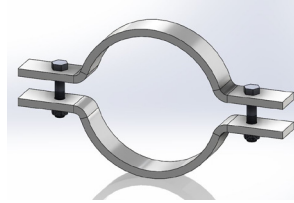


FIG. 600DIP
Socket Clamp

Finishes:
Plain, Electro-Galvanized,
Hot-Dip Galvanized, T-304 and
T-316 Stainless Steel
(Also available in four bolt)

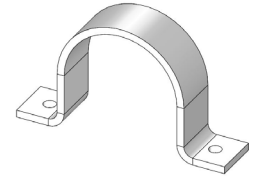


FIG. 9110HD
Hold Down Strap

Finishes:
Plain, Electro-Galvanized,
Hot-Dip Galvanized,
T-304 and T-316 Stainless Steel
Size Types:
IPS, DIP

HANGERS AND SUPPORTS



FIG. 11
Clevis Hanger

Finishes:
Plain, Electro-Galvanized,
Hot-Dip Galvanized, T-304 and
T-316 Stainless Steel
Size Type: IPS, DIP



FIG. 137

U-Bolt with 4 Hex Nuts
Finishes:
Plain, Electro-Galvanized,
Hot-Dip Galvanized, T-304 and
T-316 Stainless Steel
Size Types:
IPS, DIP

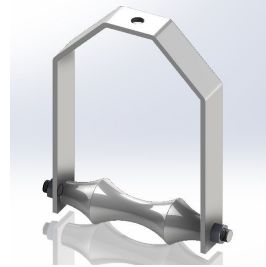


FIG. 272
Adjustable Roller Hanger

Finishes:
Plain, Electro-Galvanized,
Hot-Dip Galvanized, T-304 and
T-316 Stainless Steel

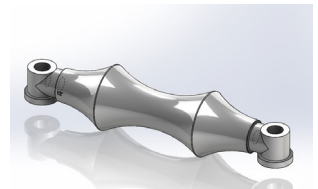


FIG. 277
Adjustable Two Rod Roller Hanger

Finishes:
Plain, Hot-Dip Galvanized, T-304
and T-316 Stainless Steel

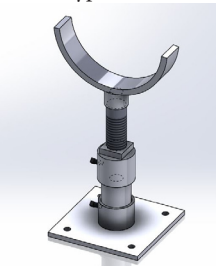


FIG. 428KT

Adjustable Pipe Saddle Support, Kit
Finishes:
Hot-Dip Galvanized, T-304 and
T-316 Stainless Steel

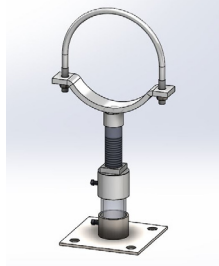


FIG. 429KT

Adjustable Pipe Saddle Support, Kit
with U-Bolt
Finishes:
Hot-Dip Galvanized, T-304 and
T-316 Stainless Steel

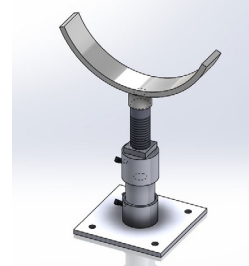


FIG. 430KTSF

Adjustable Flange Support, Kit
Finishes:
Hot-Dip Galvanized

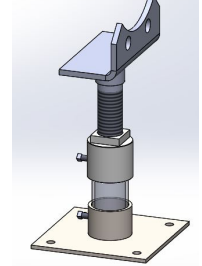


FIG. 431KT

Adjustable Flange Support, Kit, Bolt type
Finishes:
Hot-Dip Galvanized



Empire Industries has been a proud associate member of and contributor to Water and Sewer Distributors of America since 2012.

FASTENERS AND ATTACHMENTS

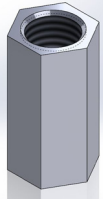


FIG. 51
Rod Coupling
Finishes:

Plain, Electro-Galvanized, T-304 and T-316 Stainless Steel

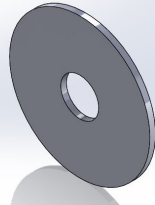


FIG. 52
Flat Washer
Finishes:

Plain, Electro-Galvanized, Hot-Dip Galvanized T-304 and T-316 Stainless Steel

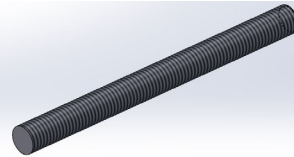


FIG. 54
Continuous Threaded Rod
Finishes:

Plain, Electro-Galvanized, Hot-Dip Galvanized T-304 and T-316 Stainless Steel

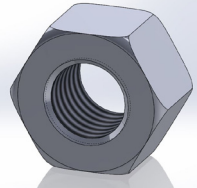


FIG. 56
Hex Nut
Finishes:

Plain, Electro-Galvanized, Hot-Dip Galvanized T-304 and T-316 Stainless Steel



FIG. 575
Corporation Eye Bolt
Finishes:
Plain

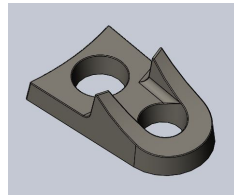


FIG. 585
Ductile Lug
Finish:
Plain

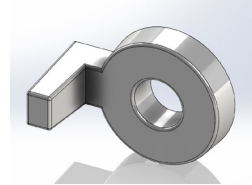


FIG. 599
Socket Clamp Washer
Finishes:
Plain, Electro-Galvanized, Hot-Dip Galvanized
(For pipe size 3" - 12")

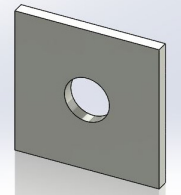


FIG. 75
Steel Washer Plate
Finishes:
Plain, Electro-Galvanized, T-304 and T-316 Stainless Steel
(For tie rod larger than 3/4")

MISCELLANEOUS

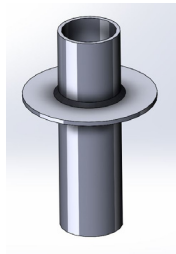


FIG. 915
Waterproof Sleeve
Finishes:
Plain, Electro-Galvanized

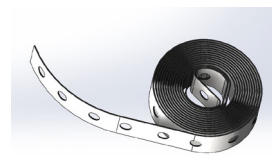


FIG. 239
Perforated Hanger Strap
Finishes:
Plain, T-304 Stainless Steel
10' and 50' rolls.