

HANGERS & SUPPORTS



FIG. 310
"Emlok" Adjustable Swivel Ring Hanger
FINISHES:
Electro-Galv, Copper Plated, Copper Epoxy Coated (Copper Gard), T-304 and T-316 Stainless Steel
SIZE TYPES:
IPS, CTS



FIG. 41A
Hanger Flange Plate
FINISHES:
Plain, Electro-Glav, Chrome Plated, Copper Epoxy Coated (Copper Gard), Solid Brass T-304 and T-316 Stainless Steel



FIG. 277
Adjustable Two Rod Roller Hanger
FINISHES:
Plain, Electro-Glav, Hot-Dip Galv, T-304 and T-316 Stainless Steel



FIG. 11
Adjustable Clevis Hanger
FINISHES:
Plain, Electro-Glav, Hot-Dip Galv, T-304 and T-316 Stainless Steel
SIZE TYPES:
IPS, DIP



FIG. 272
Adjustable Roller Hanger
FINISHES:
Plain, Electro-Glav, Hot-Dip Galv, T-304 and T-316 Stainless Steel



FIG. 10J
J-Hanger
FINISHES:
Electro-Glav, T-304 and T-316 Stainless Steel



FIG. 167
Pipe Covering Protection Shield
FINISHES:
Pre-Galvanized, T-304 and T-316 Stainless Steel



FIG. 273
Adjustable Two-Rod Roller Support
FINISHES:
Plain, Electro-Glav, Hot-Dip Galv, T-304 and T-316 Stainless Steel



FIG. 7500 Series
Rooftop Support Blocks
FINISHES:
100% Recycled Rubber Base w/ Pre-Galv Strut Channel and Electro-Glav Hardware



FIG. 41/41H
Split Ring Extension Hanger, Bolt/Hinge Type
FINISHES:
Plain, Electro-Glav, Chrome Plated, Copper Epoxy Coated (Copper Gard), Solid Brass, T-304 and T-316 Stainless Steel
SIZE TYPES:
IPS, OD, CTS

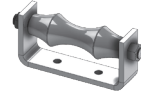


FIG. 275
Roller Chair
FINISHES:
Plain, Electro-Glav, Hot-Dip Galv, T-304 and T-316 Stainless Steel



FIG. 9650
Strut Roller Support
(For 2-7/16" x 3-1/4" Strut)
FINISHES:
Plain, Zinc Plated, Hot-Dip Galv, T-304 and T-316 Stainless Steel

CLAMPS



FIG. 50
Standard Riser Clamp
FINISHES:
Plain, Electro-Glav, Hot-Dip Galv, Copper Epoxy Coated (Copper Gard), T-304 and T-316 Stainless Steel
SIZE TYPES:
IPS, CTS



FIG. 62
Small Mouth Beam Clamp
FINISHES:
Plain, Electro-Glav



FIG. 50SA
Short Arm Riser Clamp
FINISHES:
Plain and Electro-Glav



FIG. 61
Wide Mouth Beam Clamp
FINISHES:
Plain, Electro-Glav



FIG. 21
Steel C-Clamp
FINISHES:
Plain, Electro-Glav, T-304 and T-316 Stainless Steel



FIG. 63
Electrical Rod Support Clamp
FINISHES:
Electro-Glav, T-316 Stainless Steel



FIG. 24
Purlin Clamp
FINISHES:
Plain and Electro-Glav



FIG. 136
Right Angle Clamp
FINISHES:
Hot-Dip Galv, T-316 Stainless Steel

STRAPS



FIG. 137
U-Bolt w/ 4 Hex Nuts
FINISHES:
Plain, Electro-Glav, Hot-Dip Galv, T-304 and T-316 Stainless Steel
SIZE TYPES:
IPS, DIP, Special Dim.



FIG. 231
Two Hole Pipe Strap
FINISHES:
Electro-Glav, Copper Epoxy Coated (Copper Gard), T-304 and T-316 Stainless Steel
SIZE TYPES:
IPS, OD, CTS



FIG. 233
One Hole Pipe Strap
FINISHES:
Electro-Glav, T-304 and T-316 Stainless Steel
SIZE TYPES:
IPS, OD