

CLAMPS



FIG. 50
Standard Riser Clamp

FINISHES:
Plain, Electro-Glav, Hot-Dip Galv, Copper Epoxy Coated (Copper Gard), T-304 and T-316 Stainless Steel
SIZE TYPES:
IPS, CTS



FIG. 150
Beam Clamp

FINISHES:
Electro-Glav, T-304 and T-316 Stainless Steel



FIG. 50H
Heavy Duty Riser Clamp

FINISHES:
Plain, Hot-Dip Galv, Copper Epoxy Coated (Copper Gard), T-304 and T-316 Stainless Steel



FIG. 189
Double Bolt Pipe Clamp

FINISHES:
Plain, Electro-Glav, Hot-Dip Galv, T-304 and T-316 Stainless Steel



FIG. 212
Standard Steel Pipe Clamp

FINISHES:
Plain, Electro-Glav, Hot-Dip Galv, T-304 and T-316 Stainless Steel
SIZE TYPES:
IPS, DIP



FIG. 450
Heavy Beam Clamp Assembly

FINISHES:
Plain, Hot-Dip Galv, T-304 and T-316 Stainless Steel



FIG. 216
Heavy Duty Two-Bolt Pipe Clamp

FINISHES:
Plain, Electro-Glav, Hot-Dip Galv, T-304 and T-316 Stainless Steel



FIG. 40HS
"Handy" Split Ring Hanger

FINISHES:
Electro-Glav w/ EPDM Insulation Liner
SIZE TYPES:
IPS, CTS

HANGERS AND SUPPORTS



FIG. 11
Adjustable Clevis Hanger

FINISHES:
Plain, Electro-Glav, Hot-Dip Galv, T-304 and T-316 Stainless Steel
SIZE TYPES:
IPS, DIP



FIG. 167
Pipe Covering Protection Shield

FINISHES:
Pre-Galvanized, T-304 and T-316 Stainless Steel



FIG. 272
Adjustable Roller Hanger

FINISHES:
Plain, Electro-Glav, Hot-Dip Galv, T-304 and T-316 Stainless Steel

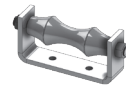


FIG. 275
Roller Chair

FINISHES:
Plain, Electro-Glav, Hot-Dip Galv, T-304 and T-316 Stainless Steel



FIG. 277
Adjustable Two Rod Roller Hanger

FINISHES:
Plain, Electro-Glav, Hot-Dip Galv, T-304 and T-316 Stainless Steel

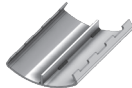


FIG. 1900
Pipe Covering Protection Saddle Series

FINISHES:
Plain, Electro-Glav, Hot-Dip Galv, T-304 and T-316 Stainless Steel



FIG. 279
Pipe Roll Stand

FINISHES:
Plain, Hot-Dip Galv, T-304 and T-316 Stainless Steel

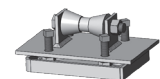


FIG. 280
Adjustable Pipe Roll Stand

FINISHES:
Plain, Hot-Dip Galv, T-304 and T-316 Stainless Steel



FIG. 428KT
Adjustable Pipe Saddle Support, Kit

FINISHES:
Hot-Dip Galv and T-316 Stainless Steel



FIG. 429KT
Adjustable Pipe Saddle Support, Kit w/ u-bolt

FINISHES:
Hot-Dip Galv and T-316 Stainless Steel



FIG. 801
Medium Welded Bracket

FINISHES:
Plain, Electro-Glav, Hot-Dip Galv, T-304 and T-316 Stainless Steel



FIG. 802
Heavy Welded Bracket

FINISHES:
Plain, Electro-Glav, Hot-Dip Galv, T-304 and T-316 Stainless Steel

GUIDES & SLIDES

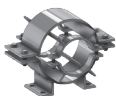


FIG. 255
Pipe Alignment Guide (Single Spider Clamp)

FINISHES:
Plain, Hot-Dip Galv, T-304 and T-316 Stainless Steel



FIG. 256
Pipe Alignment Guide

FINISHES:
Plain, Hot-Dip Galv, T-304 and T-316 Stainless Steel



FIG. 4000
Pipe Slide Tees

FINISHES:
Plain, Hot-Dip Galv, T-304 and T-316 Stainless Steel

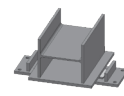


FIG. 4300
H-Slide

FINISHES:
Plain, Hot-Dip Galv and Painted