

HANGERS & CLAMPS



FIG. 310
"Emlok" Adjustable Swivel Ring Hanger
FINISHES:
Electro-Galv, Copper Plated, Copper Epoxy Coated (Copper Gard), T-304 and T-316 Stainless Steel
SIZE TYPES:
IPS, CTS

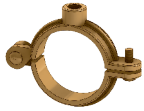


FIG. 41H
Split Ring Extension Hanger (Hinge Design)
FINISHES:
Plain, Electro-Glav, Copper Epoxy Coated (Copper Gard)
SIZE TYPES:
IPS, CTS

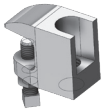


FIG. 62
Small Mouth Beam Clamp
FINISHES:
Plain, Electro-Galv, T-304 and T-316 Stainless Steel



FIG. 131
Milford Hanger for Copper Tubing
FINISHES:
Copper Plated, Copper Epoxy Coated (Copper Gard)



FIG. 110
Light Weight Clevis Hanger
FINISHES:
Plain, Electro-Glav, Copper Plated, Copper Epoxy Coated (Copper Gard), T-304 and T-316 Stainless Steel
SIZE TYPES:
IPS, CTS



FIG. 50
Riser Clamp
FINISHES:
Plain, Electro-Glav, Copper Plated, Copper Epoxy Coated (Copper Gard), T-304 and T-316 Stainless Steel
SIZE TYPES:
IPS, CTS



FIG. 40HS
"Handy" Split Ring Hanger
FINISHES:
Electro-Glav w/ EPDM Insulation Liner
SIZE TYPES:
IPS, CTS



FIG. 237
DWV (Drain, Waste, Vent) Hanger
FINISHES:
Electro-Glav, Copper Plated, Plastic Coated



FIG. 41
Split Ring Extension Hanger (Bolt Type)
FINISHES:
Plain, Electro-Glav, Copper Epoxy Coated (Copper Gard), Solid Brass, T-304 and T-316 Stainless Steel
SIZE TYPES:
IPS, OD, CTS

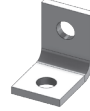


FIG. 53
Angle Bracket
FINISHES:
Plain, Electro-Glav, Hot-Dip Galv, T-304 and T-316 Stainless Steel



FIG. 127
Natick Hanger for Copper Tubing
FINISHES:
Copper Plated, Copper Epoxy Coated (Copper Gard)



FIG. 31
Band Hanger
FINISHES:
Plain, Electro-Glav, Copper Plated, Copper Epoxy Coated (Copper Gard), T-304 and T-316 Stainless Steel
SIZE TYPES:
IPS, CTS



FIG. 41A
Hanger Flange Plate
FINISHES:
Plain, Electro-Glav, Copper Epoxy Coated (Copper Gard), Solid Brass T-304 and T-316 Stainless Steel



FIG. 55
Hanger Bolts
FINISHES:
Plain and Electro-Glav



FIG. 129
Van (Bell Type) Hanger for Copper Tubing
FINISHES:
Copper Plated, Copper Epoxy Coated (Copper Gard)

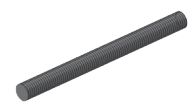


FIG. 54
Continuous Threaded Rod
FINISHES:
Plain, Electro-Glav, Hot-Dip Galv, T-304 and T-316 Stainless Steel

STRAPS



FIG. 231
Two Hole Pipe Strap
FINISHES:
Electro-Glav, Copper Epoxy Coated (Copper Gard), T-304 and T-316 Stainless Steel
SIZE TYPES:
IPS, OD, CTS

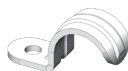


FIG. 233
One Hole Pipe Strap
FINISHES:
Electro-Glav, T-304 and T-316 Stainless Steel
SIZE TYPES:
IPS, OD



FIG. 235
Wire Pipe Hook
FINISHES:
Plain, Plastic Coated, Copper Plated



FIG. 239
Perforated Hanger Strapping
FINISHES:
Plain, Electro-Glav, Copper Plated, T-304 Stainless Steel
(Also Available in Electro-Glav w/ Alternating Hole)

Empire Industries offers a wide selection of Nailplates, Straps, Hangers and Clamps for residential plumbing applications. Ask your sales representative or visit EmpireIndustries.com for more information.