

HANGERS AND SUPPORTS



FIG. 11SS/SX
Adjustable Clevis Hanger
ALSO AVAILABLE IN O.D. SIZES



FIG. 41SSI/SXI
Split Ring Extension Hanger
ALSO AVAILABLE IN O.D. SIZES

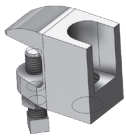


FIG. 62SS/SX
Small Mouth Beam Clamp



FIG. 97SS/SX
Extended Pipe Clamp



FIG. 189SS/SX
Double Bolt Pipe Clamp



FIG. 272SS/SX
Adjustable Roller Hanger



FIG. 429KTSX
Adjustable Pipe Saddle Support with U-Bolt, Kit



FIG. 13SS/SX
Weldless Eye Nut



FIG. 41ASSI/SXI
Hanger Flange Plate

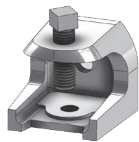


FIG. 63SX
Electrical Rod Support Clamp



FIG. 136SS
Right Angle/Korn Clamp



FIG. 212SS/SX
Standard Steel Pipe Clamp



FIG. 277SS/SX
Adjustable Two Rod Roller Hanger



FIG. 600DIPSS/SX
Socket Clamp



FIG. 21LSS/SX
Steel C-Clamp



FIG. 50SS/SX
Standard Riser Clamp
ALSO AVAILABLE IN O.D. SIZES

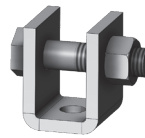


FIG. 66LSS/SX
Welding Beam Attachment



FIG. 137SS/SX
Standard U-Bolt with 4 Hex Nuts
ALSO AVAILABLE IN O.D. SIZES



FIG. 231SS/SX
Two Hole Pipe Strap
ALSO AVAILABLE IN O.D. SIZES



FIG. 310SS/SX
"Emlok" Adjustable Swivel Ring Hanger
ALSO AVAILABLE IN O.D. SIZES



FIG. 800SS/SX Series
Steel Brackets



FIG. 31SS/SX
Band Hanger

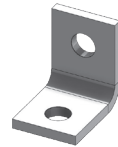


FIG. 53SS/SX
Angle Bracket
ALSO AVAILABLE IN O.D. SIZES



FIG. 95SS/SX
Offset Pipe Clamp
ALSO AVAILABLE IN O.D. SIZES



FIG. 167SS/SX
Pipe Covering Protection Shields

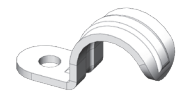


FIG. 233SS/SX
One Hole Pipe Strap
ALSO AVAILABLE IN O.D. SIZES



FIG. 428KTSX
Adjustable Pipe Support Kit



FIG. DPCSS
Manhole Clamp
Mounting Kit (DPCSSKIT) also available

STRUT AND STRUT ACCESSORIES

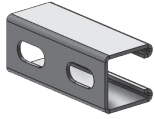


FIG. 7001SS/SX
12GA Slotted Strut (1-5/8" x 1-5/8")

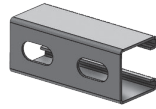


FIG. 7101SS/SX
14GA Slotted Strut (1-5/8" x 1-5/8")

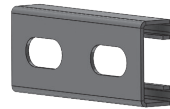


FIG. 7201SS/SX
14GA Slotted Strut (1-5/8" x 13/16")

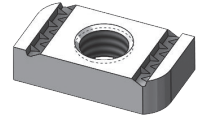


FIG. 8000SX
Strut Nut w/o Spring

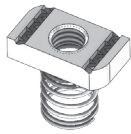


FIG. 8100SX
Strut Nut w/ Regular Spring

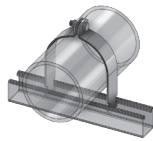


FIG. 8200SS/SX
Rigid IPS Strut Clamp Assembled

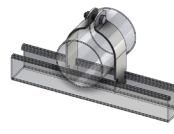


FIG. 8250SS/SX
O.D. Tubing Strut Clamp, Assembled

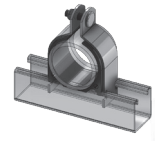


FIG. 8500SS/SX
Cushion Strut Clamp



FIG. 8575SX
Conduit Clamp with Bolt and Nut

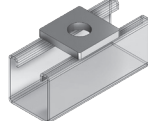


FIG. 9001FFSS/SX
Square Strut Washer

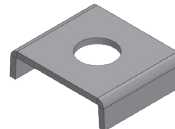


FIG. 9001UFFSS/SX
U-Saddle Strut Washer

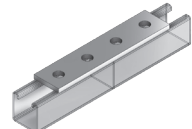


FIG. 9007FFSS/SX
4-Hole Splice Plate

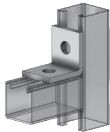


FIG. 9022CASS/SX
2-Hole Corner Angle
(1-7/8" x 2")

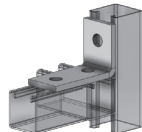


FIG. 9026CASS/SX
3-Hole Corner Angle
(2-1/4" x 3-1/2")



FIG. 9027CASS/SX
3-Hole Corner Angle
(1-5/8" x 4-1/8")



FIG. 9030CASS/SX
3-Hole Corner Angle
(1-5/8" x 4-1/8")



FIG. 9031CASS/SX
4-Hole Corner Angle
(3-3/4" x 3-7/8")

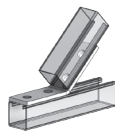


FIG. 9046AFSS/SX
4-Hole Open Angle 45°
(3-1/2" x 3-11/16")



FIG. 9048AFSS/SX
4-Hole Closed Angle 45°
(4-3/8" x 5")

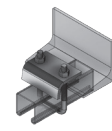


FIG. 9086BCSS/SX
Strut U-Bolt Beam Clamp
(For 13-16" x 1-5/8" Strut)

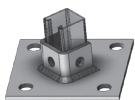


FIG. 9092PBSS/SX
Post Base - Diagonal
(For 1-5/8" x 1-5/8" Strut)

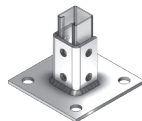


FIG. 9094PBSS/SX
Post Base - Square
(For 1-5/8" x 1-5/8" Strut)

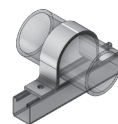


FIG. 9110HDSS/SX
2-Hole Hold Down Clamp
ALSO AVAILABLE IN O.D. SIZES

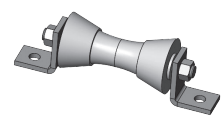


FIG. 9650SS/SX
Strut Roller Support
(For 2-7/16" x 3-1/4" Strut)