

CLAMPS



FIG. DPCSS
Manhole Clamp
FINISHES:
T-304 Stainless Steel
SIZE TYPES:
SDR35, IPS, DIP
Mounting Kit (DPCSSKIT) also available



FIG. 95
Offset Pipe Clamp
FINISHES:
Plain, Electro-Galv, Hot-Dip Galv, T-304 and T-316 Stainless Steel
SIZE TYPES:
IPS, DIP



FIG. 600DIP
Socket Clamp
FINISHES:
Plain, Electro-Galv, Hot-Dip Galv, T-304 and T-316 Stainless Steel
(Also available in four bolt)

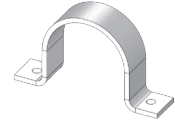


FIG. 9110HD
Hold Down Clamp
FINISHES:
Plain, Electro-Galv, Hot-Dip Galv, T-304 and T-316 Stainless Steel
SIZE TYPES:
IPS, DIP

HANGERS AND SUPPORTS



FIG. 11
Adjustable Clevis Hanger
FINISHES:
Plain, Electro-Glav, Hot-Dip Galv, T-304 and T-316 Stainless Steel
SIZE TYPES:
IPS, DIP



FIG. 137
U-Bolt w/ 4 Hex Nuts
FINISHES:
Plain, Electro-Glav, Hot-Dip Galv, T-304 and T-316 Stainless Steel
SIZE TYPES:
IPS, DIP



FIG. 272
Adjustable Roller Hanger
FINISHES:
Plain, Electro-Glav, Hot-Dip Galv, T-304 and T-316 Stainless Steel



FIG. 277
Adjustable Two Rod Roller Hanger
FINISHES:
Plain, Electro-Glav, Hot-Dip Galv, T-304 and T-316 Stainless Steel



FIG. 428KT
Adjustable Pipe Saddle Support, Kit
FINISHES:
Hot-Dip Galv, T-304 and T-316 Stainless Steel



FIG. 429KT
Adjustable Pipe Saddle Support, Kit w/ u-bolt
FINISHES:
Hot-Dip Galv, T-304 and T-316 Stainless Steel

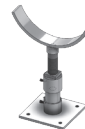


FIG. 430KT
Adjustable Flange Support, Kit
FINISHES:
Hot-Dip Galv

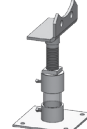


FIG. 431KT
Adjustable Flange Support, Kit, Bolt type
FINISHES:
Hot-Dip Galv

FASTENERS AND ATTACHMENTS



FIG. 51
Rod Coupling
FINISHES:
Plain, Electro-Glav, Hot-Dip Galv, T-304 and T-316 Stainless Steel



FIG. 52
Flat Washer
FINISHES:
Plain, Electro-Glav, Hot-Dip Galv, T-304 and T-316 Stainless Steel

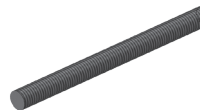


FIG. 54
Continuous Threaded Rod
FINISHES:
Plain, Electro-Glav, Hot-Dip Galv, T-304 and T-316 Stainless Steel

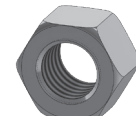


FIG. 56
Hex Nut
FINISHES:
Plain, Electro-Glav, Hot-Dip Galv, T-304 and T-316 Stainless Steel

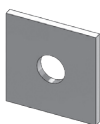


FIG. 75
Steel Washer Plate
FINISHES:
Plain, Electro-Glav, T-304 and T-316 Stainless Steel
(For Tie Rod Larger Thans 3/4")



FIG. 585
Ductile Lug
FINISHES:
Plain

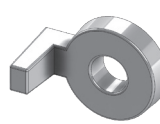


FIG. 599
Socket Clamp Washer
FINISHES:
Plain, Electro-Glav, Hot-Dip Galv
(For Pipe Size 3" - 12")

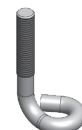


FIG. 575
Corporation Eye Bolt
FINISHES:
Plain