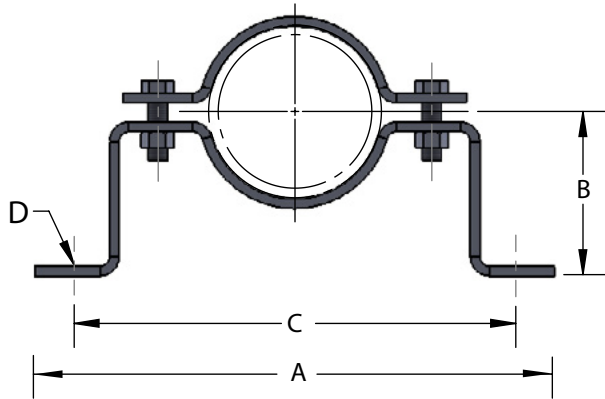


FIG. 95DIP

offset pipe clamp for AWWA
ductile iron and C-900 PVC pipe



Materials/Finishes	Electro-Galvanized (95DIPG)	Hot-Dip Galvanized (95DIPHDG)
	T-304 Stainless Steel (95DIPSS)	T-316 Stainless Steel (95DIPSX)
Variants:	N/A	
Service:	Designed for supporting horizontal or vertical pipe lines at a fixed distance from wall or floor. This clamp can be furnished with "B" dimensions to suit field conditions.	
Approvals:	N/A	
Ordering:	Specify figure number, pipe type, finish and pipe size	
Notes:	Available in Ductile Iron Pipe (95DIP) and IPS (95) Sizes. Custom B dimension available. If clamp is being installed vertically, please contact factory for load ratings.	



PIPE SIZE AWWA	DIP OD	BOLT	B	A	C	D	WGT EACH (lbs)	MAX REC LOAD (lbs)
3	3.96	3/8	3-3/4	12-3/4	11	7/16	2.52	410
4	4.80	1/2	4-1/4	13-1/2	11-1/2	9/16	3.61	600
6	6.90	1/2	5-5/16	16-3/8	14-1/2	9/16	6.51	850
8	9.05	1/2	6-5/16	19-1/4	17-1/4	9/16	7.92	850
10	11.10	3/4	7-3/4	25	23-1/8	13/16	20.03	900
12	13.20	3/4	8-3/4	27	25	13/16	23.24	900

PROJECT INFORMATION			APPROVAL STAMP	
Project:			Notes:	
Address:				
Contractor:				
Engineer:				
Date:				
Approved	Approved as Noted	Not Approved		