

SERVICE: To support pipe while providing axial movement combined with lateral movement, lateral guidance, uplift restraint and/or anchorage. Slides, guides and uplift restraints to be welded or bolted to structure and welded or clamped to the pipe. Glass filled virgin Teflon™ (PTFE) slide bearing provides low coefficient of friction to reduce stress on the pipe and supporting structure. Anchors to be continuously welded to pipe and structure only.

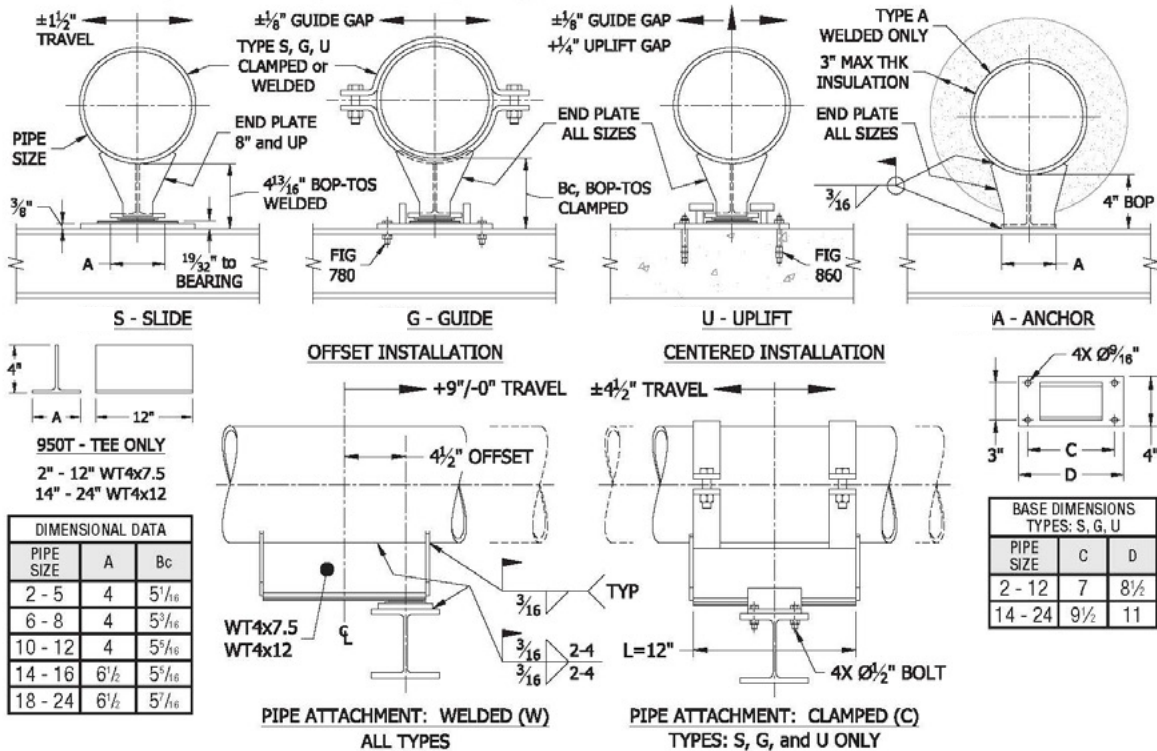
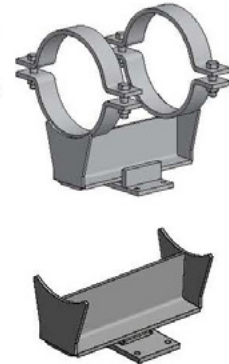
MATERIAL: Carbon Steel meeting ASTM: A36, A307 Gr A and A563 Gr A
Slide Bearing: PTFE-to-PTFE, average coefficient of friction = 0.06

FINISH: Black or Hot-Dip Galvanized meeting ASTM A123

MAX TEMP: 650°F at pipe wall
300°F at PTFE bearing.

STANDARDS: MSS SP-58 Type 35

ORDERING: Specify figure number, type, pipe size, pipe attachment type and finish. (Order mounting hardware separately.)



MAXIMUM RECOMMENDED LOADS					
TYPE	PIPE SIZE	VERTICAL DOWN	VERTICAL UP	LATERAL	AXIAL
S	2 - 24	8000	n/a	n/a	n/a
	2 - 6	8000	n/a	1000	n/a
G	8 - 24	8000	n/a	2000	n/a
	2 - 6	8000	800	1000	n/a
U	8 - 24	8000	800	2000	n/a
	2 - 6	4000	800	1000	2000
A	8 - 24	8000	800	2000	5000

Notes:

- Special fabricated tee and base available for specified axial and lateral travel, insulation banding slots, heat loss notches and/or grade 304 and 316 stainless steel. Provide performance criteria and dimensions A, BOP, C, D and/or L.
- For PTFE bearing temperatures 300°F to 500°F, specify high temperature bearing adhesive. Available in black finish only over 350°F.
- Alternative PTFE-on-stainless steel slide bearing option available.
- Weld in accordance with AWS D1.1 with 70000 psi filler metal. Minimum weld sizes shown. Tee-to-pipe and base-to-structure welds may be continuous.
- Anchor loads for standard weight carbon steel pipe at design conditions 400 psi and 500°F. Corrosion allowance 1/32" for pipe sizes ≤ 6" and 1/16" for sizes ≥ 8".

PROJECT INFORMATION			APPROVAL STAMP
Project:			Notes:
Address:			
Contractor:			
Engineer:			
Date:			
Approved	Approved as Noted	Not Approved	