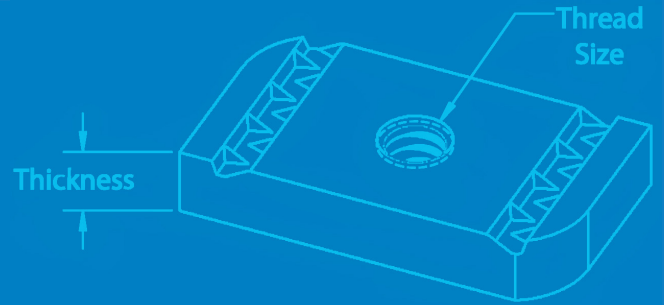
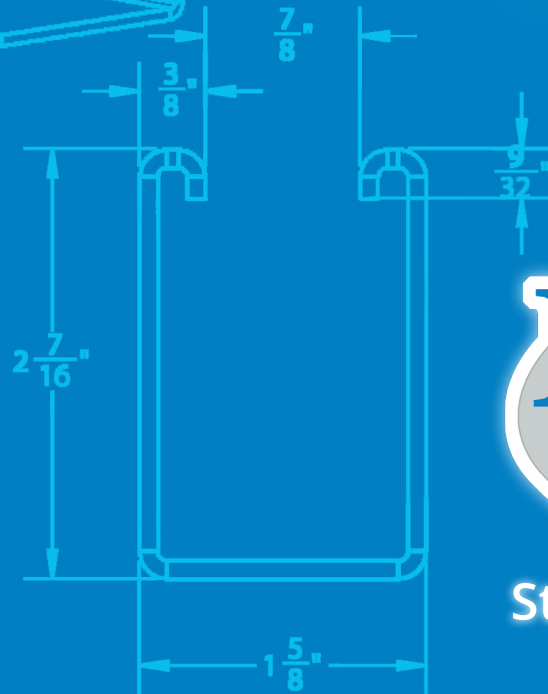
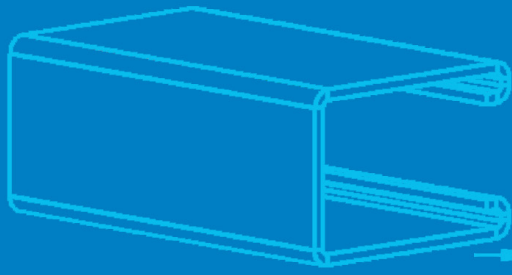
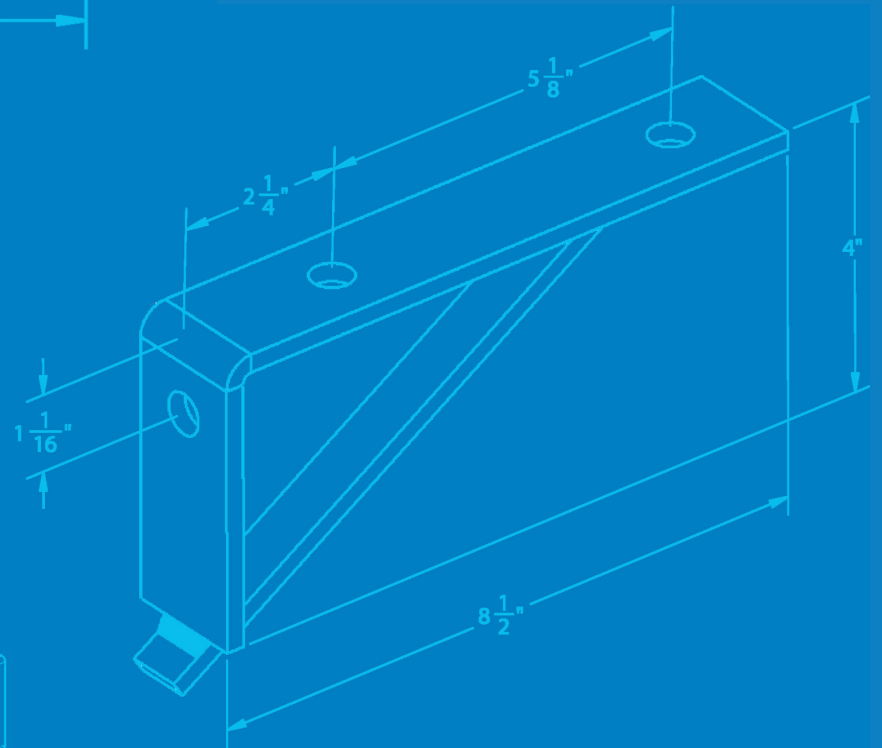
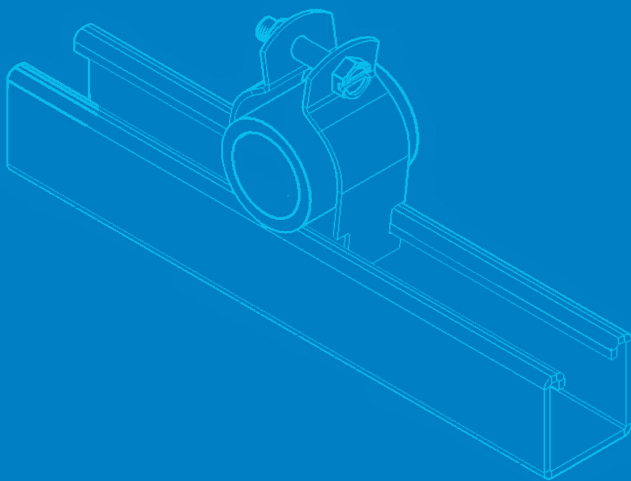


"Supporting Industry Since 1942"



Strut and Strut Accessories.



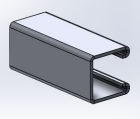


FIG. 7000
1-5/8 x 1-5/8
12ga solid strut
channel



FIG. 7000A
1-5/8 x 1-5/8 12ga solid
back to back strut channel

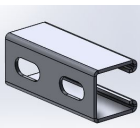


FIG. 7001
1-5/8 x 1-5/8
12ga slotted
strut channel



FIG. 7001A
1-5/8 x 1-5/8 12ga slotted
back to back strut channel

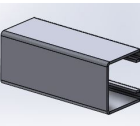


FIG. 7100
1-5/8 x 1-5/8
14ga solid strut
channel

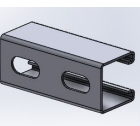


FIG. 7101
1-5/8 x 1-5/8
14ga slotted
strut channel

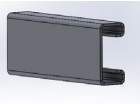


FIG. 7200
13/16 x 1-5/8
14ga solid strut
channel

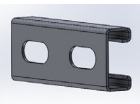


FIG. 7201
13/16 x 1-5/8
14ga slotted
strut channel

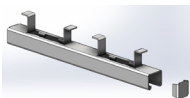


FIG. 7225
1-3/8 x 1-5/8
12ga continuous
concrete insert

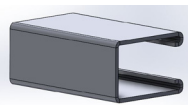


FIG. 7230
2-7/16 x 1-5/8
12ga solid strut
channel



FIG. 7231
2-7/16 x 1-5/8
12ga slotted
strut channel



FIG. 7241
2-7/16 x 1-5/8
12ga solid back
to back strut
channel

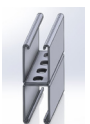


FIG. 7240
2-7/16 x 1-5/8
12ga slotted
back to back
strut channel

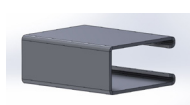


FIG. 7250
3-1/4 x 1-5/8
12ga solid strut
channel



FIG. 7251
3-1/4 x 1-5/8
12ga slotted
strut channel

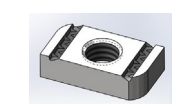


FIG. 8000
strut nut
without spring

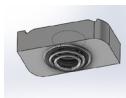


FIG. 8050
strut nut
with short
spring

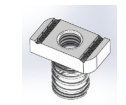


FIG. 8100
strut nut
with regular
spring

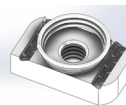


FIG. 8150
top spring
strut nut

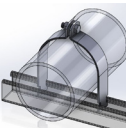


FIG. 8200
rigid IPS strut clamp
assembled

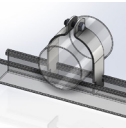


FIG. 8250
OD tubing strut clamp
assembled

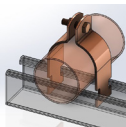


FIG. 8300CT / CTP
copper tubing strut
clamp, assembled -
copper epoxy (copper-
gard) / copper plated

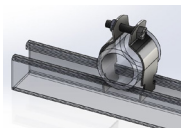


FIG. 8350
universal strut clamp
assembled

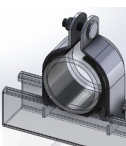


FIG. 8500
cushion strut clamp

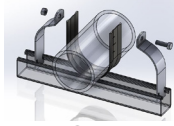


FIG. 8550
cushion pipe wrap



FIG. 8575
conduit clamp
with bolt and nut

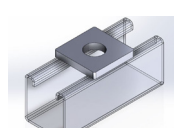


FIG. 9001FF
square strut washer
1-5/8 x 1-5/8

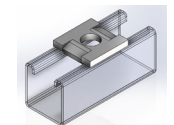


FIG. 9002FF
square strut washer
with guides
1-5/8 x 1-5/8

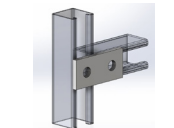


FIG. 9003FF
2-hole splice plate
1-5/8 x 3-1/2

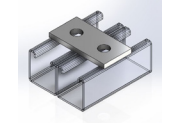


FIG. 9004FF
2-hole splice plate
side by side strut
1-5/8 x 3-1/4

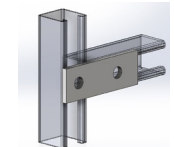


FIG. 9005FF
2-hole splice plate
1-5/8 x 4-5/8

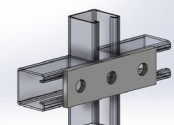


FIG. 9006FF
3-hole splice plate
1-5/8 x 5-3/8

Filling industry's needs for Pipe Hangers and Supports, Strut, Strut Accessories, Metal Stampings and Custom Fabrication.

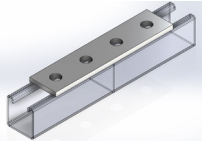


FIG. 9007FF
4-hole splice plate
1-5/8 x 7-1/4

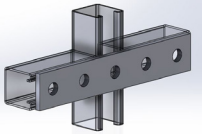


FIG. 9008FF
5-hole splice plate
1-5/8 x 9-1/8

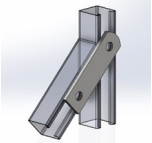


FIG. 9009FF
2-hole swivel plate
1-5/8 x 5-1/4



FIG. 9010FF
3-hole swivel plate
1-5/8 x 7-1/8

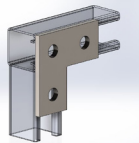


FIG. 9011FF
3-hole corner plate
3-1/2 x 3-1/2

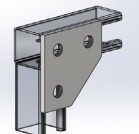


FIG. 9012FF
3-hole corner gusset
3-1/2 x 3-1/2

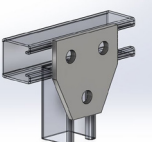


FIG. 9013FF
3-hole tee gusset
3-1/2 x 3-1/2

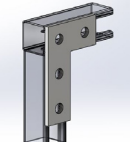


FIG. 9014FF
4-hole corner plate
3-1/2 x 5-3/8

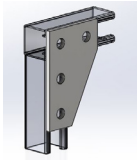


FIG. 9015FF
4-hole corner gusset
3-1/2 x 5-3/8

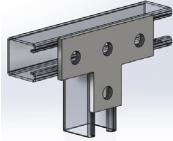


FIG. 9016FF
4-hole tee plate
3-1/2 x 5-3/8

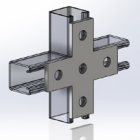


FIG. 9017FF
5-hole cross plate
5-3/8 x 5-3/8

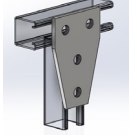


FIG. 9018FF
4-hole tee gusset
3-1/2 x 5-3/8

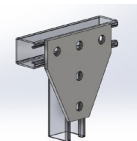


FIG. 9019FF
5-hole tee gusset
5-3/8 x 5-3/8

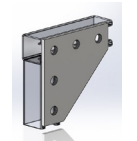


FIG. 9020FF
5-hole corner gusset
5-3/8 x 5-3/8

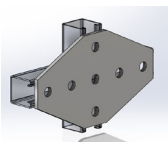


FIG. 9021FF
7-hole cross gusset
5-3/8 x 9-1/8

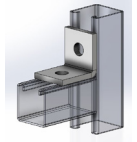


FIG. 9022CA
2-hole corner angle
1-7/8 x 2

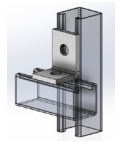


FIG. 9023CA
2-hole corner angle
1-5/8 x 2-1/4

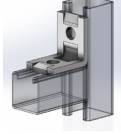


FIG. 9024CA
2-hole corner angle
with guides
2-1/8 x 2-1/8

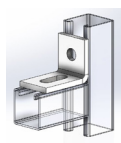


FIG. 9025CA
1-hole adjustable corner
angle with slot
1-7/8 x 2-5/8

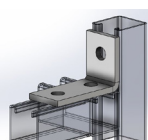


FIG. 9026CA
3-hole corner angle
2-1/4 x 3-1/2



FIG. 9027CA
3-hole corner angle
1-5/8 x 4-1/8

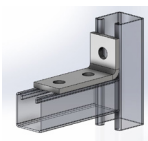


FIG. 9028CA
3-hole corner gusset
1-7/8 x 3-7/8



FIG. 9029CA
2-hole adjustable corner
angle with slot
2-5/8 x 3-7/8



FIG. 9030CA
4-hole corner angle
3-1/2 x 4-1/8

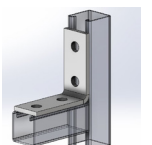


FIG. 9031CA
4-hole corner angle
3-3/4 x 3-7/8

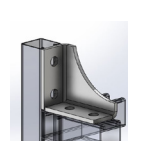


FIG. 9032CA
4-hole webbed
corner angle, RH
3-3/4 x 4-1/8

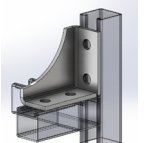


FIG. 9033CA
4-hole webbed
corner angle, LH
3-3/4 x 4-1/8

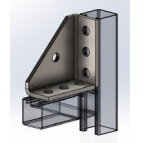


FIG. 9034CA
7-hole universal
corner angle
4-1/8 x 4-1/8

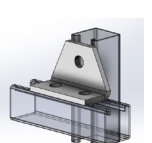


FIG. 9035CA
3-hole shelf gusset
angle
4-1/8 x 4-1/8

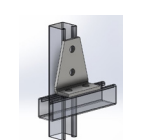


FIG. 9036CA
4-hole shelf gusset
angle
1-5/8 x 4-1/8



FIG. 9037CA
4-hole shelf gusset
3 way angle
2-1/4 x 3-1/2

Empire Strut and Strut Fittings provide an economical solution for Electrical, Mechanical and Industrial support applications.



FIG. 9038CA
5-hole shelf gusset
3 way angle
3-1/2 x 4-1/8



FIG. 9039CA
5-hole shelf gusset
angle
1-5/8 x 4-1/8



FIG. 9040CA
2-hole 45° knee
brace, 12"



FIG. 9042CA
2-hole 45° knee
brace, 18"



FIG. 9043CA
2-hole 45° knee
brace, 24"

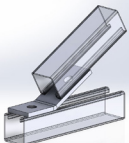


FIG. 9044AF
2-hole open angle 30°
2-3/8 x 3-1/8



FIG. 9045AF
2-hole open angle 45°
2-3/8 x 3-1/8



FIG. 9046AF
4-hole open angle 45°
3-1/2 x 3-11/16

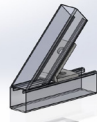


FIG. 9047AF
2-hole closed angle 45°
2-1/2 x 3-1/2

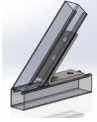


FIG. 9048AF
4-hole closed angle 45°
4-3/8 x 5

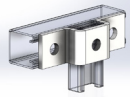


FIG. 9049UF
3-hole "u" support
for
1-5/8 x 13/16 strut

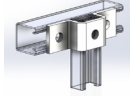


FIG. 9050UF
3-hole "u" support
for
1-5/8 x 1 strut

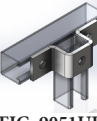


FIG. 9051UF
3-hole "u" support
for
1-5/8 x 1-3/8 strut

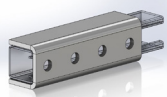


FIG. 9052UF
4-hole splice clevis
for
1-5/8 x 1-5/8 strut

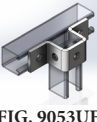


FIG. 9053UF
5-hole "u" support
for
1-5/8 x 1-5/8 strut

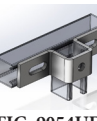


FIG. 9054UF
adjustable 1-hole,
2-slot "u" support
for
1-5/8 x 1-5/8 strut

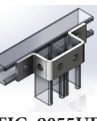


FIG. 9055UF
6-hole "u" support
for double
1-5/8 x 1-5/8 strut



FIG. 9056UF
3-hole "u" support
for
1-5/8 x 2-7/16 strut

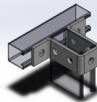


FIG. 9057UF
3-hole "u" support
for
1-5/8 x 3-1/4 strut

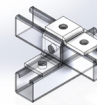


FIG. 9058ZF
2-hole offset "z"
support

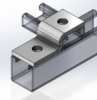


FIG. 9058ZF
2-hole offset "z"
support

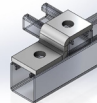


FIG. 9059ZF
2-hole "z" support
for
1-5/8 x 13/16 strut

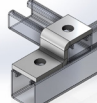


FIG. 9060ZF
2-hole "z" support
for
1-5/8 x 1 strut

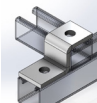


FIG. 9061ZF
2-hole "z" support
for
1-5/8 x 1-3/8 strut

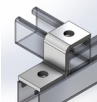


FIG. 9062ZF
2-hole "z" support
for
1-5/8 x 1-5/8 strut

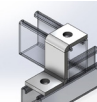


FIG. 9063ZF
2-hole "z" support
for
1-5/8 x 2-7/16 strut



FIG. 9064ZF
2-hole "z" support
for
1-5/8 x 3-1/4 strut or
strut combination

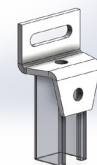


FIG. 9065ZF
adjustable offset
gusseted "z" support

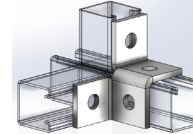


FIG. 9066WF
4-hole double corner
connection

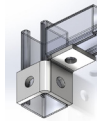


FIG. 9067WF
2-hole single corner
connection, RH



FIG. 9068WF
2-hole single corner
connection, LH

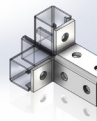


FIG. 9069WF
6-hole double corner
connection



FIG. 9070WF
5-hole single corner
connection, RH

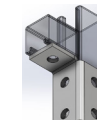


FIG. 9071WF
5-hole single corner
connection, LH

Protective and Identification Coatings:

- Electro Galvanizing • Hot Dip Galvanizing • Plastic Coating • Green Painting • Copper Plating • Copper Epoxy Coating (Copper-Gard) •

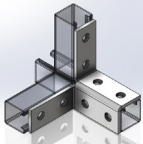


FIG. 9072WF
8-hole double corner connection

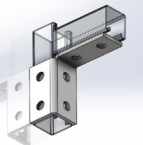


FIG. 9073WF
6-hole single corner connection, RH

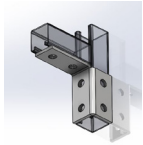


FIG. 9074WF
6-hole single corner connection, LH



FIG. 9075WF
6-hole triple wing connection

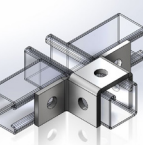


FIG. 9076WF
5-hole double wing connection



FIG. 9077WF
9-hole triple wing connection

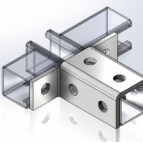


FIG. 9078WF
8-hole double wing connection



FIG. 9079WF
12-hole triple wing connection

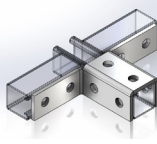


FIG. 9080WF
10-hole double wing connection

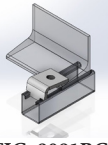


FIG. 9081BC
strut beam clamp, notched

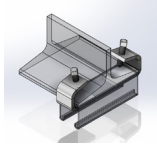


FIG. 9082BC
strut beam clamp, light duty, 1/4" thick

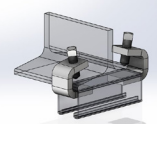


FIG. 9083BC
strut beam clamp, heavy duty, 3/8" thick

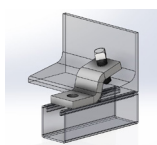


FIG. 9084BC
strut "z" beam clamp, heavy duty

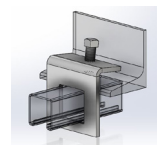


FIG. 9085BC
strut beam clamp, window type for 1-5/8" strut

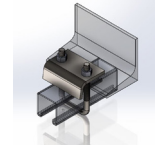


FIG. 9086BC
strut u-bolt beam clamp for 13/16 and 1-5/8" strut

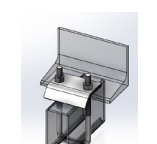


FIG. 9087BC
strut u-bolt beam clamp for 2-7/16 and 3-1/4" strut



FIG. 7505RT
mini rooftop support block



FIG. 7250RT
rooftop support block

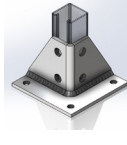


FIG. 9088PB
post base for 1-5/8 x 1-5/8" strut, 5-1/8" base

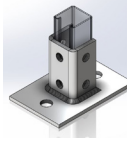


FIG. 9089PB
post base for 1-5/8 x 1-5/8" strut, 4 x 6 base

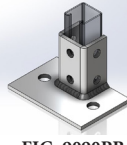


FIG. 9090PB
post base - flush mount for 1-5/8 x 1-5/8" strut, 4 x 6 base

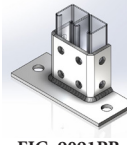


FIG. 9091PB
post base for 1-5/8 x 3-1/4" strut, 4 x 7 base

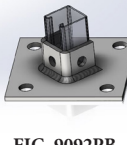


FIG. 9092PB
post base for 1-5/8 x 3-1/4" strut, 6 base

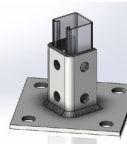


FIG. 9093PB
post base - diagonal for 1-5/8 x 1-5/8" strut, 6 base

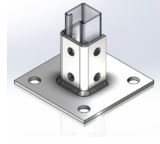


FIG. 9094PB
post base - square for 1-5/8 x 1-5/8" strut, 6 base

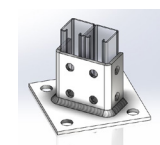


FIG. 9095PB
post base for 1-5/8 x 3-1/4" strut, 6 base



FIG. 9103BB - FIG. 9109BB
heavy duty brackets, 8-1/2" - 20-1/2"

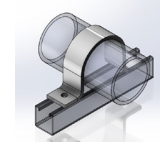


FIG. 9110HD
2-hole hold down clamp

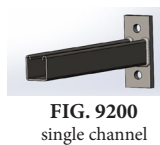


FIG. 9200
single channel reversible bracket

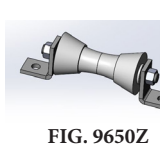


FIG. 9650Z
strut roller support

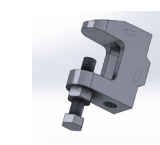


FIG. 60
1/4" Beam Clamp

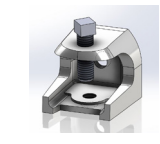


FIG. 63
electrical rod support clamp



EMPIRE INDUSTRIES STAINLESS
STEEL PRODUCTS.
KEEP IT CLEAN - MAKE IT STAINLESS.

T-304 AND T-316 STAINLESS ITEMS AVAILABLE FROM STOCK.

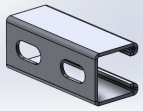


FIG. 7001SS
1-5/8 x 1-5/8
12ga slotted
strut channel

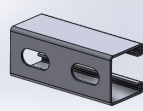


FIG. 7101SS
1-5/8 x 1-5/8
14ga slotted
strut channel

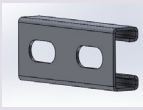


FIG. 7201SS
13/16 x 1-5/8
14ga slotted
strut channel

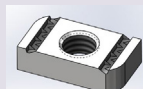


FIG. 8000SS
strut nut
without spring

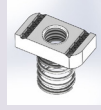


FIG. 8100SS
strut nut
with regular
spring

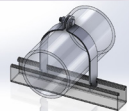


FIG. 8200SS
rigid IPS strut clamp
assembled

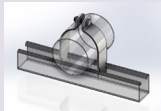


FIG. 8250SS
OD tubing strut clamp
assembled

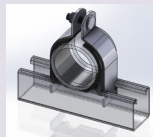


FIG. 8500SS
cushion strut clamp

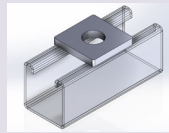


FIG. 9001FFSS
square strut washer
1-5/8 x 1-5/8

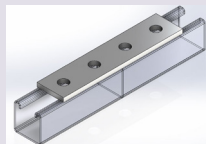


FIG. 9007FFSS
4-hole splice plate
1-5/8 x 7-1/4

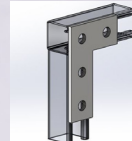


FIG. 9014FFSS
4-hole corner plate
3-1/2 x 5-3/8

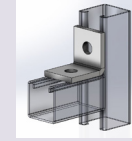


FIG. 9022CASS
2-hole corner angle
1-7/8 x 2



FIG. 9030CASS
4-hole corner angle
3-1/2 x 4-1/8

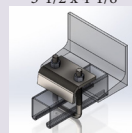


FIG. 9086BCSS
strut u-bolt beam clamp
for 13/16 and 1-5/8 strut

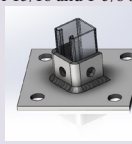


FIG. 9092PBSS
post base
for 1-5/8 x 3-1/4
strut, 6 base

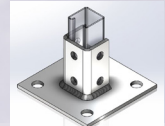


FIG. 9094PBSS
post base - square
for 1-5/8 x 1-5/8
strut, 6 base

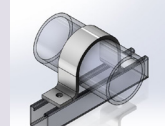


FIG. 9110HDSS
2-hole hold
down clamp

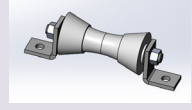


FIG. 9650SS
strut roller
support

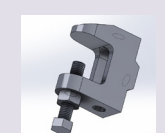


FIG. 62SS
small mouth beam clamp



FIG. 63SX
electrical rod support clamp