

Empire Industries' Pipe Saddle and Flange Support Kits are readily available through our vast distributor network and provide easy to install pipe and flange support systems. All components are Hot-Dip Galvanized save for the stainless steel set screws. The Contractor should field cut 2" schedule 40 (3" schedule 40 for sizes 14" and 16" 428 and 429) galvanized steel pipe to the necessary length. The set screws are provided to ensure vertical and horizontal stability. The special cast steel coupling and accompanying 8" straight tapped nipple provide up to 4-1/2" of support adjustment. Base plates are pre-punched with holes for quick installation.

PIPE SADDLE SUPPORT KITS:

428KT

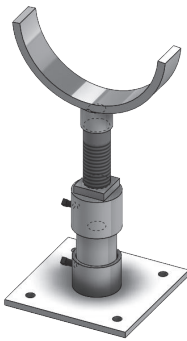


FIG. 428KT
Adjustable Pipe Saddle Support, Kit
FINISHES:
Hot-Dip Galv (2" - 16"), T-304 Stainless Steel (2" - 12")
and T-316 Stainless Steel (2" - 16")
SIZE RANGE:
2" - 16"
SIZE TYPES:
IPS, DIP

429KTU

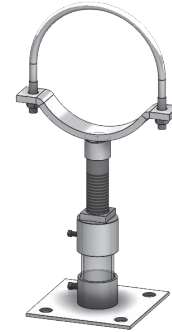


FIG. 429KTU
Adjustable Pipe Saddle Support, Kit w/ u-bolt
FINISHES:
Hot-Dip Galv (2" - 16"), T-304 Stainless Steel (2" - 12")
and T-316 Stainless Steel (2" - 16")
SIZE RANGE:
2" - 16"
SIZE TYPES:
IPS, DIP

FLANGE SUPPORT KITS:

430KT

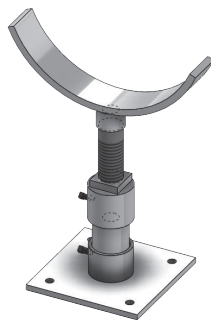


FIG. 430KT
Adjustable Flange Support, Kit
FINISHES:
Hot-Dip Galv
SIZE RANGE:
3" - 12"

431KT

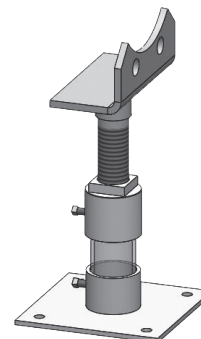


FIG. 431KT
Adjustable Bolt On Flange Support, Kit
FINISHES:
Hot-Dip Galv (3" - 12"), T-304 Stainless Steel (4" - 8")
and T-316 Stainless Steel (4" - 8")
SIZE RANGE:
3" - 12"