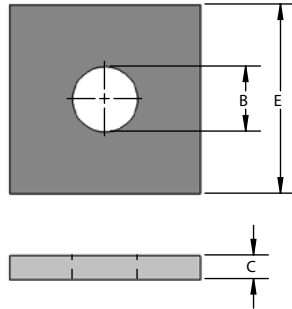
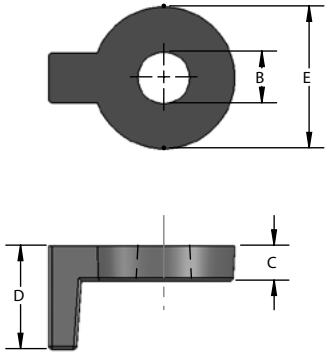


3/4" Style

1" through 1-1/2" Style



Materials/Finishes:	Plain Carbon Steel (599B)	Electro-Galvanized (599G)
	Hot-Dip Galvanized (599HDG)	
Variants:	N/A	
Service:	Designed to be used with figure 600 socket clamp, washer lugs hook around clamp bolts to secure tie rods within clamp legs.	
Approvals:	N/A	
Ordering:	Specify figure number, finish and size.	
Notes:	The 3/4" rod size socket clamp washer is a cast iron product with tab feature. This accommodates pipe sizes 4"-12". The 1"-1-1/2" rod size washer are a carbon steel flat style. These accommodate pipe sizes 14"-24".	

ROD SIZE	STEEL SIZE	C	D	E	FOR USE WITH PIPE SIZE	WGT EACH (lbs)
3/4	7/8	5/8	13/4	23/8	3" - 12"	0.80
1	1-1/8	1/2	-	4	14"	2.16
1-1/8	1-1/4	1/2	-	4	16"	2.13
1-1/4	1-3/8	3/4	-	4	18"	3.14
1-3/8	1-1/2	3/4	-	4	20"	3.08
1-1/2	1-9/16	3/4	-	4	24"	3.02

PROJECT INFORMATION	APPROVAL STAMP
Project:	Notes:
Address:	
Contractor:	
Engineer:	
Date:	
Approved      Approved as Noted      Not Approved	